



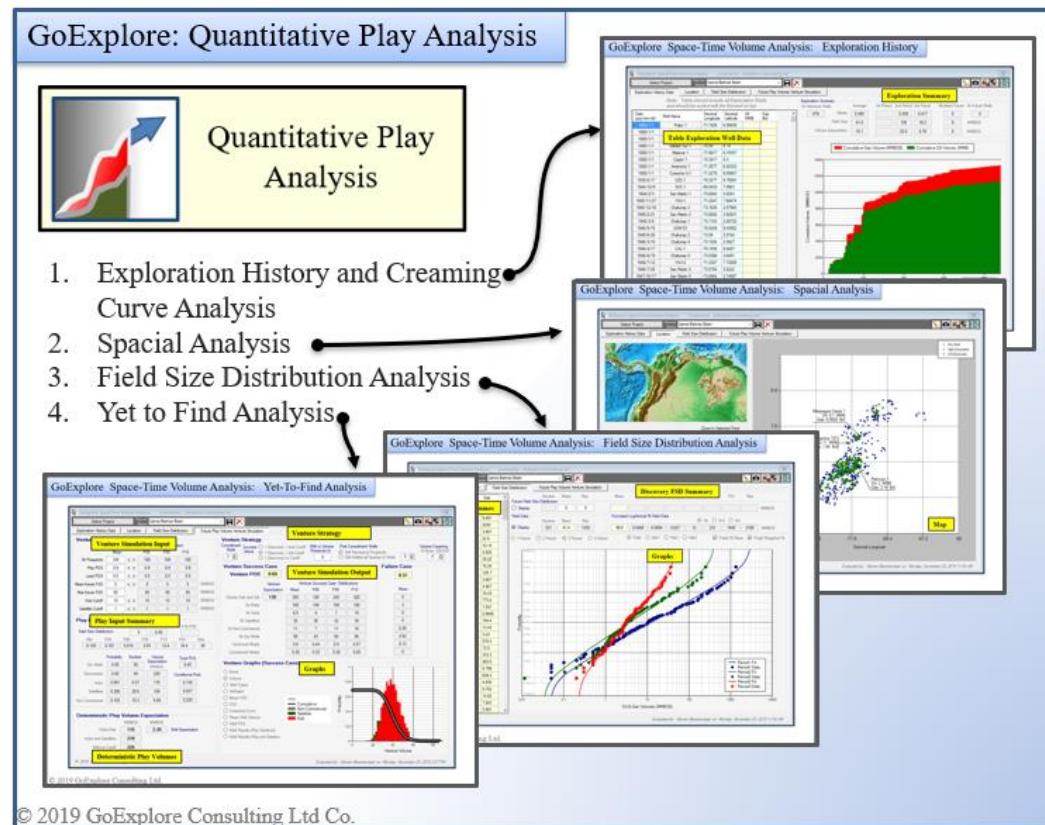
GoExplore Consulting

Free Friday Webinars

Quantitative Play Analysis

June 5th 9am Houston Time

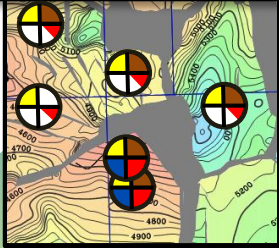
- Introduction to Play Based Evaluation
- Play Yet-to-Find Calculation
- GoExplore: Quantitative Play Analysis
- Wrap-up



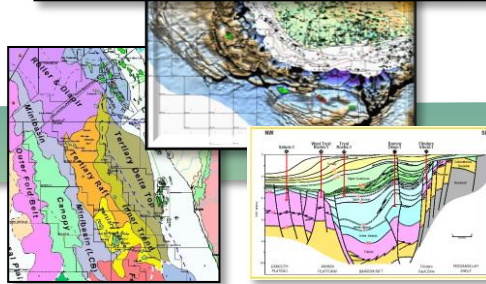
Download Trial version at: www.goexplore.consulting/install-trial-license

Introduction Play Based Exploration

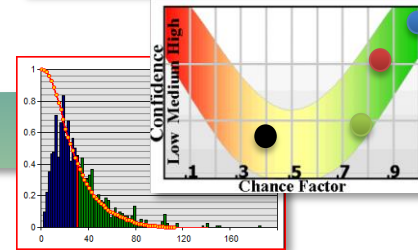
10. Lookback Analysis



11. Play & Prospect Mapping



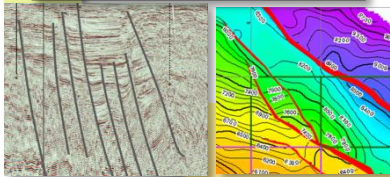
12 Prospect Risk & Volumes



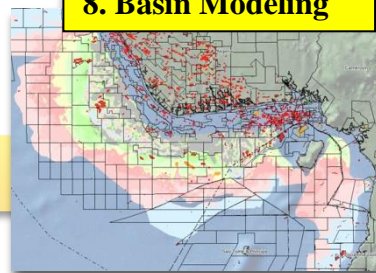
Prospect

Prospect Portfolio

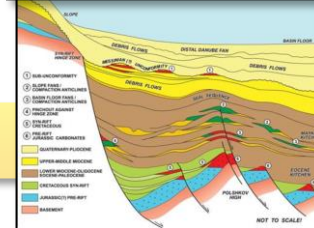
9. Trap Identification



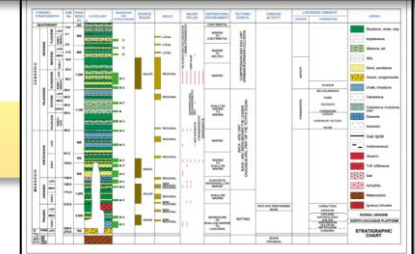
8. Basin Modeling



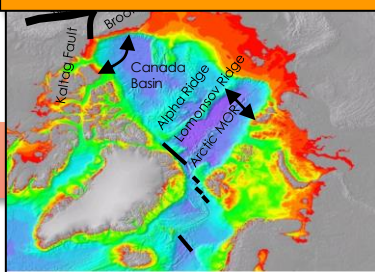
7. Play Identification



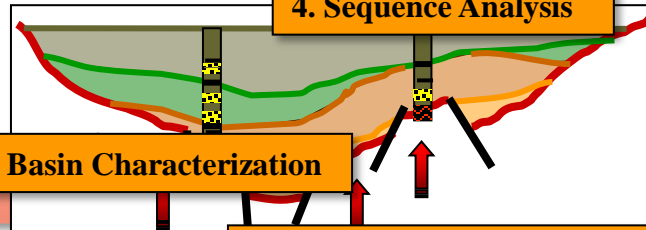
6. SR, Reservoir Seal Distribution



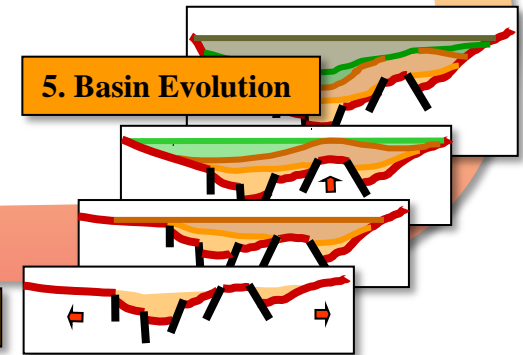
1. Plate Tectonic Setting



4. Sequence Analysis



5. Basin Evolution

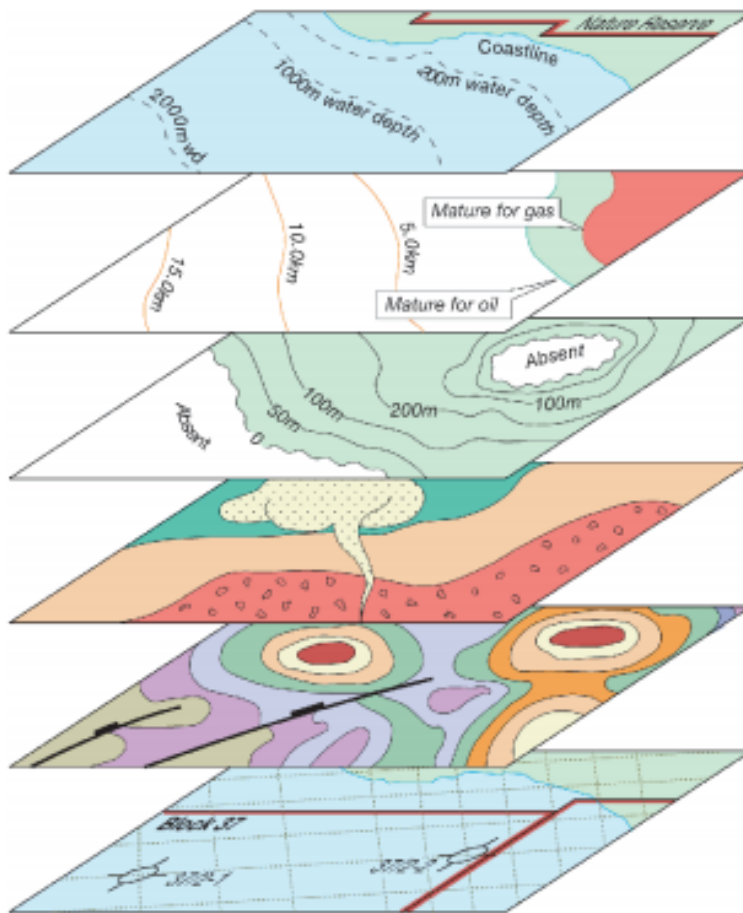


2. Basin Characterization

3 Tectonic-stratigraphic Frame

Basin

Input data example



Focus map

ARC Gis/
Openworks Concessions
Partnerships

Source and Maturity Map

Flux map	SR Quality
Slicks/seeps	Temperature
Inversion Timing	Fetch map

Top Seal Isopach Map

TA I Fault seal risk
TAII Pressure Analysis
Timing

Reservoir Facies Map

Isopach	AVO/
Porosity/PermNet/	Amplitudes
Net to Gross	Provenance

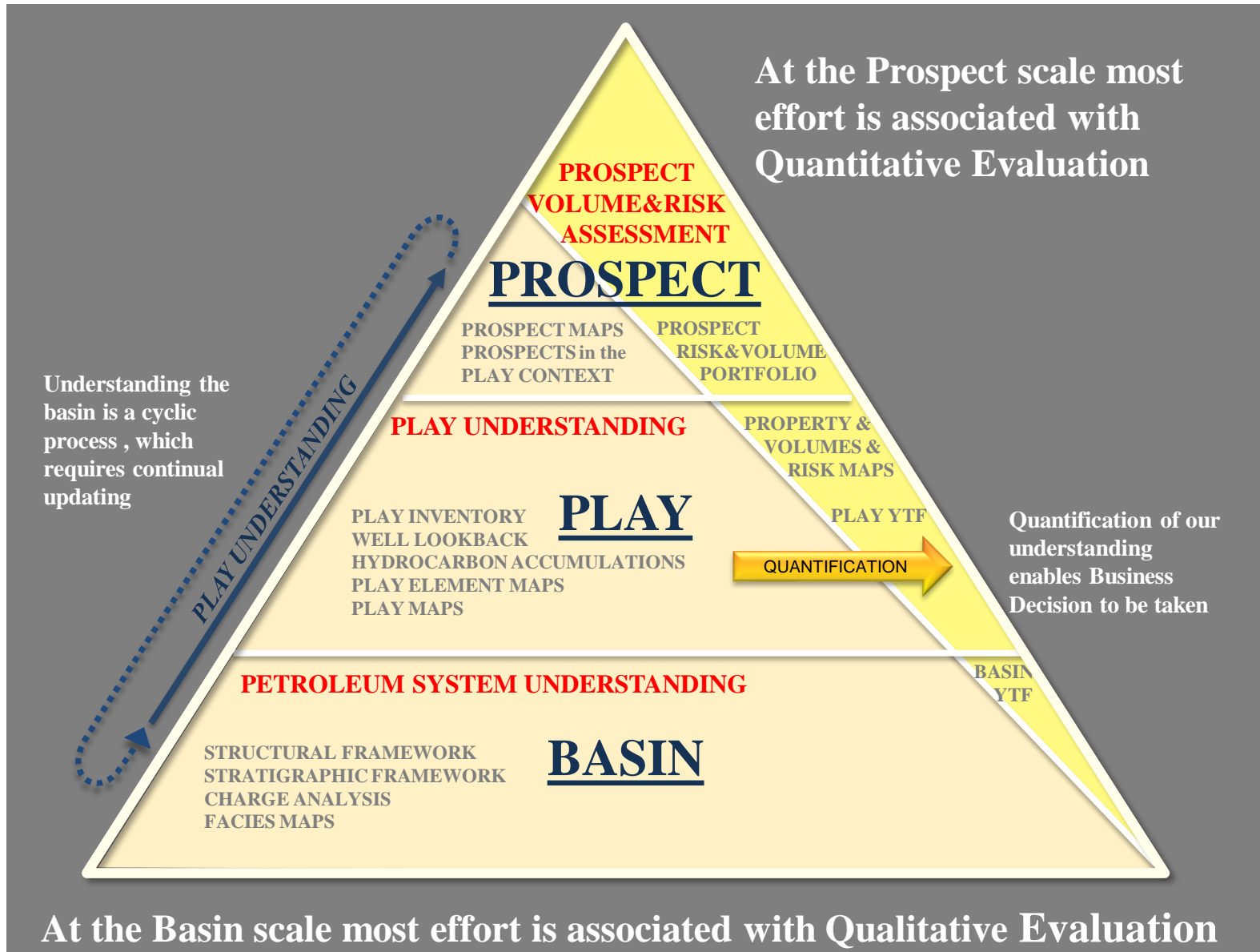
Top Reservoir Structure Map

Tectono-strat Timing
Velocity Sensitivity
Fault Analysis

Database Map

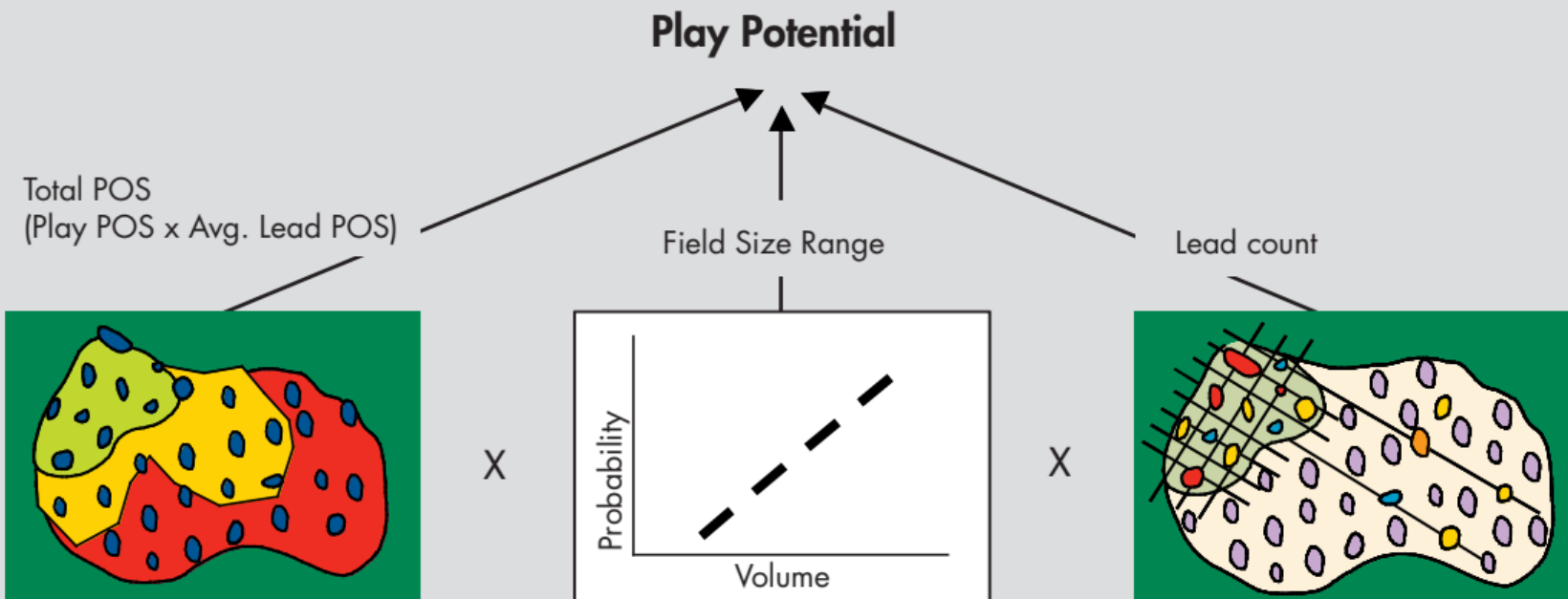
Wells/Penetration Map
Success/Failure analysis
Risk statistics
Field Analouaes

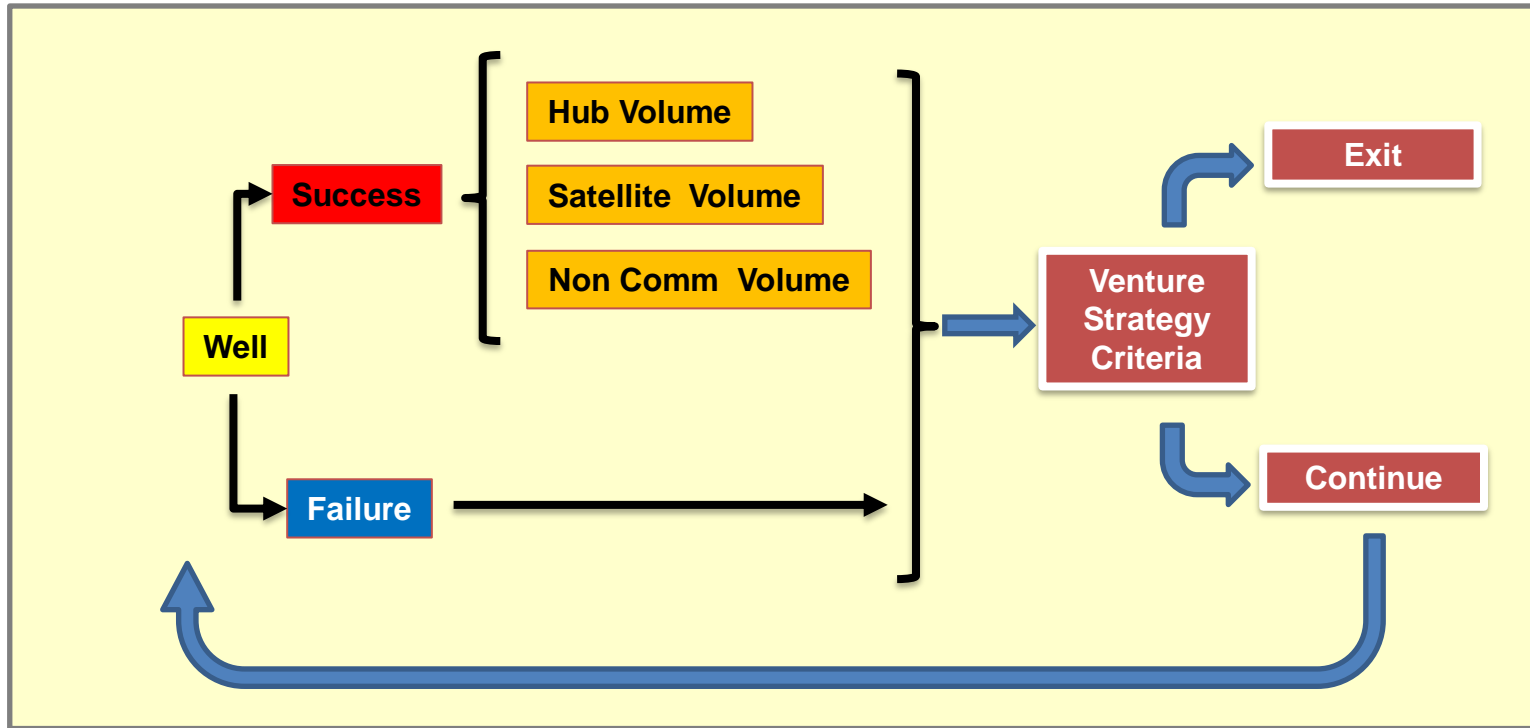
The PBE Triangle: Qualitative and Quantitative Aspects



The Basic Equation:

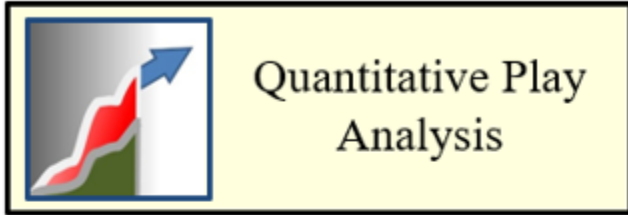
Play potential = Total POS (@ zero cutoff) * Future FSD * Remaining lead count



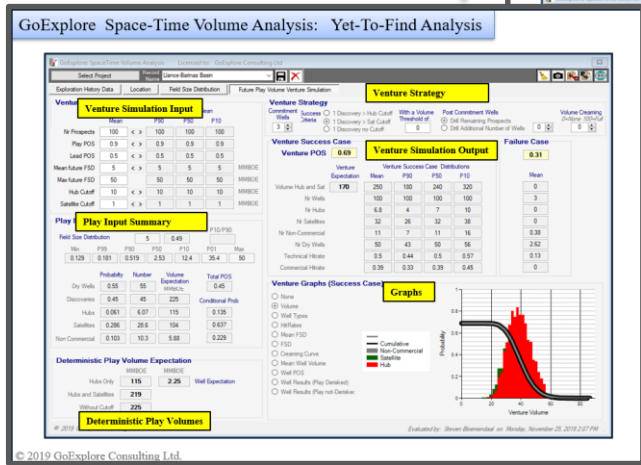
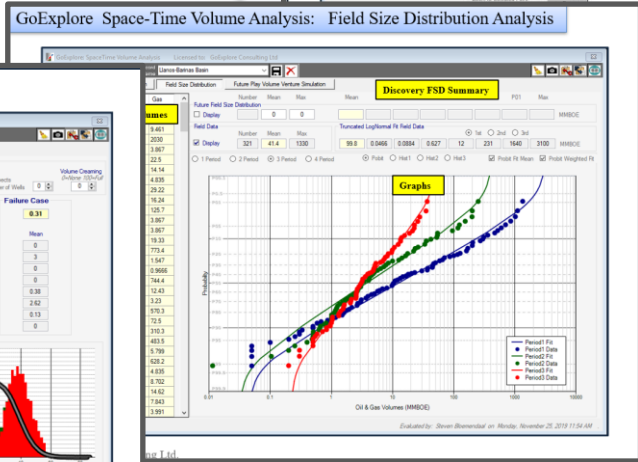
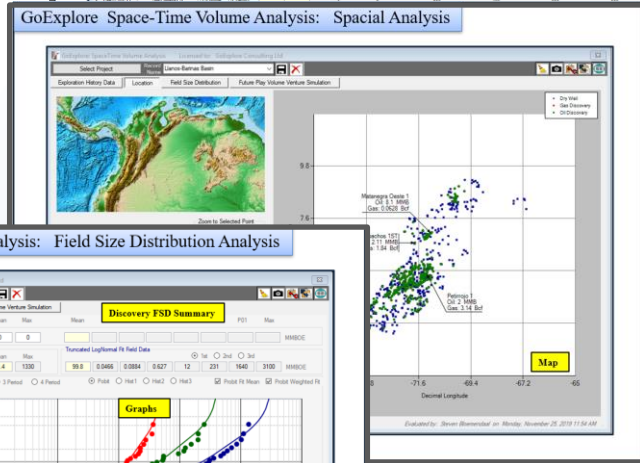
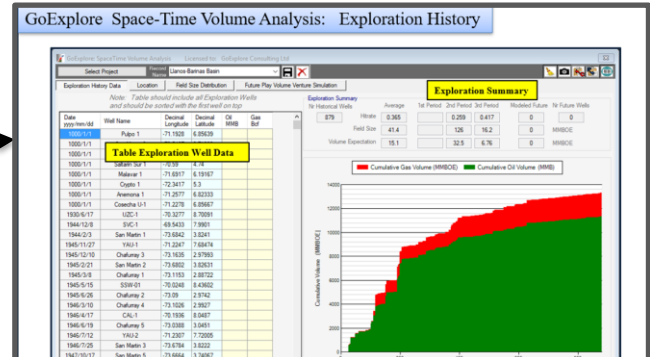


Results: Venture Chance of Success
Venture Volume Distribution
Venture Expectation

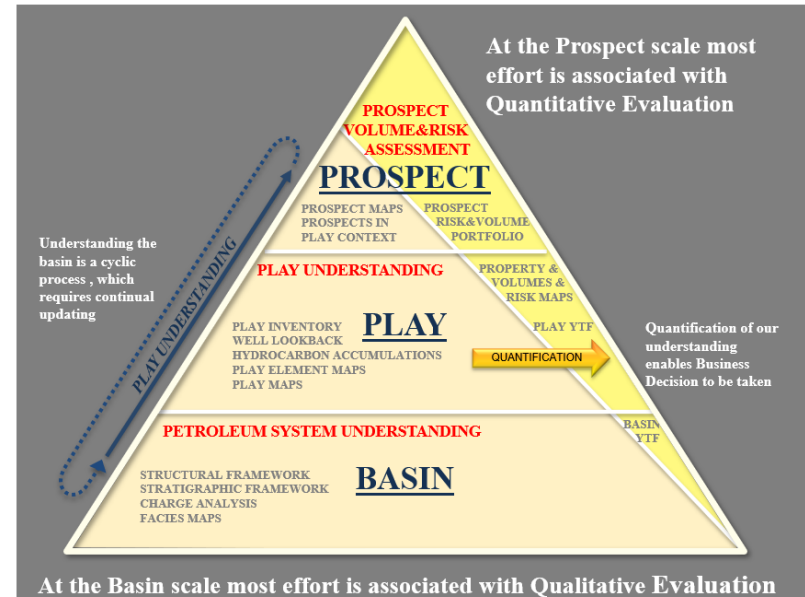
GoExplore: Quantitative Play Analysis



1. Exploration History and Creaming Curve Analysis
2. Spacial Analysis
3. Field Size Distribution Analysis
4. Yet to Find Analysis



- **Play Based Exploration** is about understanding the Basin/Plays and building a foundation and context for **Prospect Evaluation**.
- **Quantitative Play Analysis** helps to make Play-level Business Decisions (e.g. Basin/Play entries).
- For YTF estimates it is essential to understand the
 - Geology
 - Exploration History
 - Play Analogs



GoExplore: Quantitative Play Analysis

Quantitative Play Analysis

1. Exploration History and Creaming Curve Analysis
2. Spatial Analysis
3. Field Size Distribution Analysis
4. Yet to Find Analysis

GoExplore Space-Time Volume Analysis: Exploration History

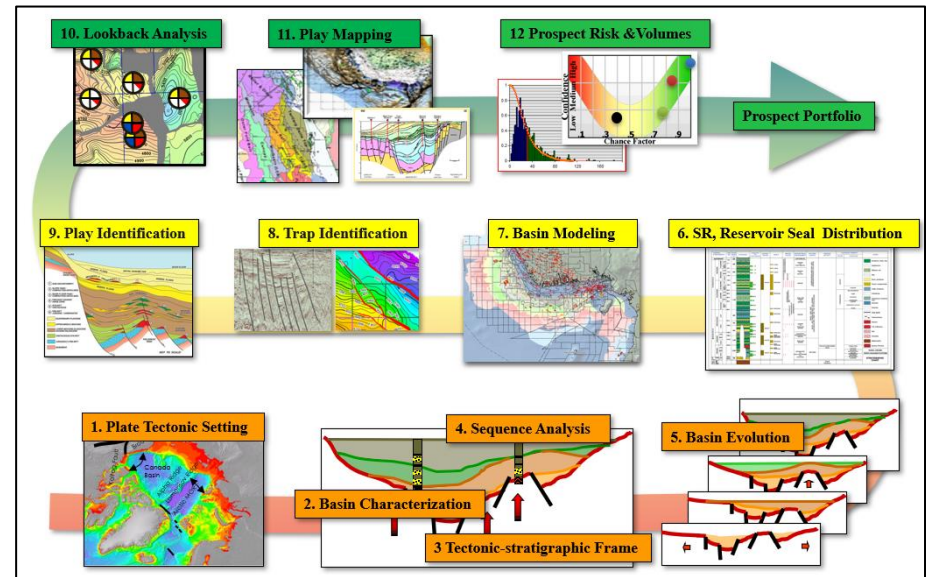
GoExplore Space-Time Volume Analysis: Spatial Analysis

GoExplore Space-Time Volume Analysis: Field Size Distribution Analysis

GoExplore Space-Time Volume Analysis: Yet-To-Find Analysis

© 2019 GoExplore Consulting Ltd Co.

We run a 3-day and 5-day hands on course on Play Based Exploration.



You can download the Application at:
www.goexplore.consulting/install-trial-license

Contact: Bloemendaal@GoExplore.Consulting



GoExplore Consulting

Free Friday Webinars
Any Questions ?



GoExplore Consulting

Free Friday Webinars
Thank You